



Instruction Manual for enLux DL1-TC Down Light into a Ceiling Panel without a Recess Can Fixture

Important

When using electrical equipment, safety precautions should always be observed.

1. READ and FOLLOW ALL SAFETY INSTRUCTIONS
2. Ensure there are no hot or live electrical surfaces

Installation

Step 1 Turn off or disconnect the electrical power.

Step 2 Confirm the Product's input voltage matches or is compatible with the line voltage.

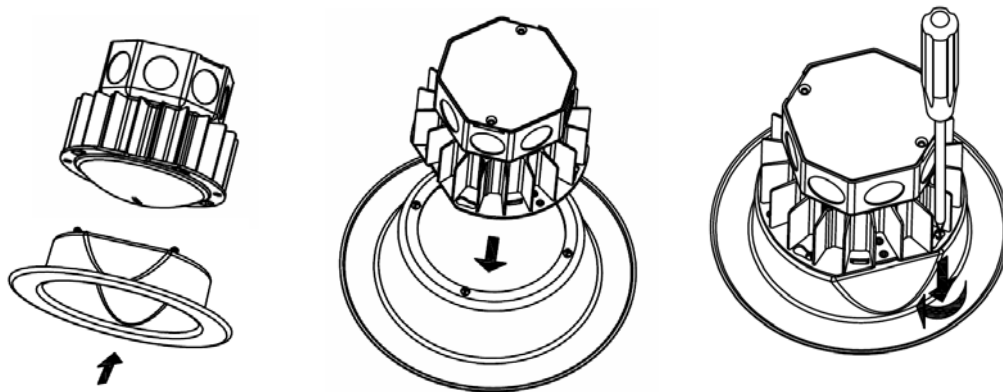
Check the voltage rating on the Product Bar Code label. The Product only accepts 1 Φ (single phase) electricity.

enLux Lighting is not responsible or liable for incorrect power connection.

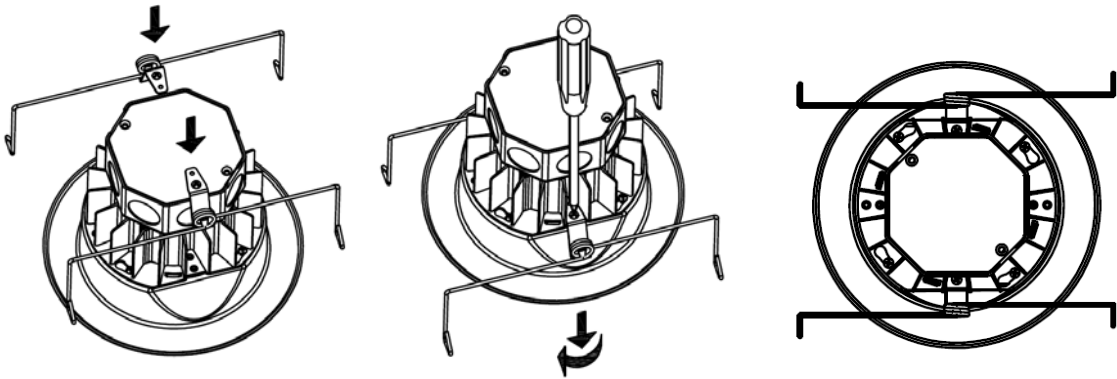


Step 3 Assemble trim and torsion spring bracket to the LED module.

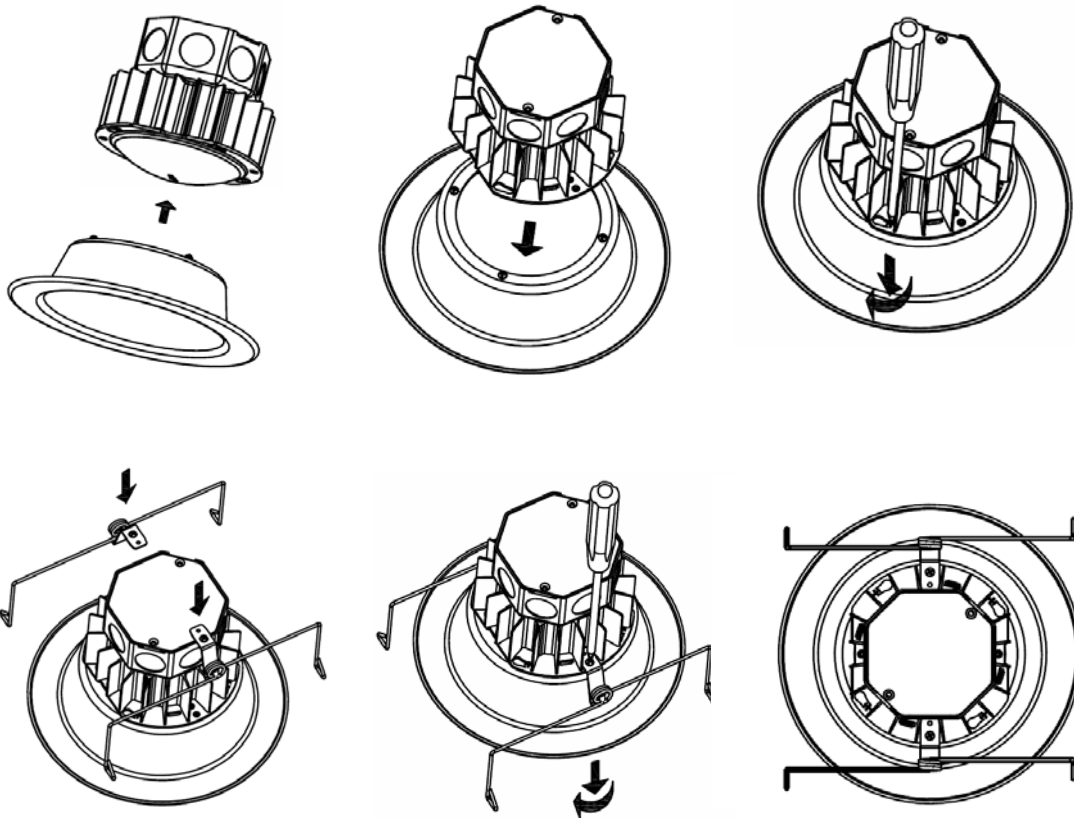
DL1-TC5



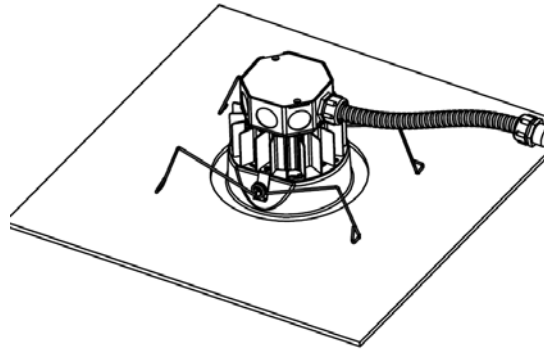
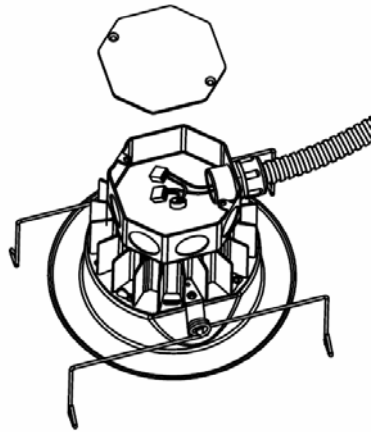
- The screws have NYLOK anti-loosening coating
- A smaller handle screwdriver may not have sufficient torque to tighten the screws
- The trim screws must be tightened firmly to insure good thermal contact
- Do not over torque the screw to prevent striping the threads.



For DL1-TC6 and DL1-TC8



Step 4 Make electric wire connections



Step 6 The Product is installed and is ready to be operated.

Step 5 Snap the M Spring springs above the ceiling panel.

